

## INTRODUCING THE INSPIRED COLLECTION

Explore where creativity takes you  
with our all-new collection  
inspired by iconic works of art.



The Frame

The Great Wave

Sunflowers

### SET PLAY FREE.

**Plus-Plus USA**  
1801 Rutherford Road  
Greenville, SC 29609  
[www.plus-plus.us](http://www.plus-plus.us)

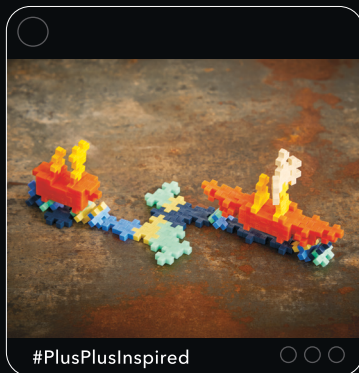
**Plus-Plus A/S**  
Borupvej 20  
DK-4300 Holbæk  
[www.plus-plus.com](http://www.plus-plus.com)

Trademark and Patent Info:  
[www.plus-plus.com/legal](http://www.plus-plus.com/legal)  
Item No. 4333

Made in Holbæk,  
Denmark



## WHAT WILL YOU CREATE?



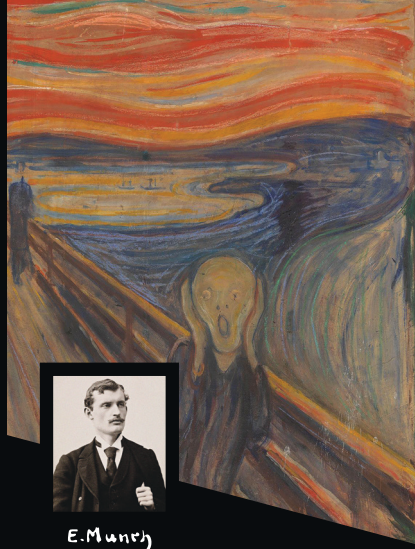
Looking for the instructions? Scan the code  
for a Plus-Plus *Inspired* step-by-step guide  
to fuel your imagination. Go ahead, take  
a creative adventure with  
these timeless masterpieces  
and discover new  
possibilities all your own.



### JOIN OUR CREATIVE COMMUNITY

See what other **#PlusPlusInspired** fans  
around the world are making and share  
photos of your *Inspired* creations.

@PlusPlusUSA @PlusPlus\_official



E. Munch

**PLUS  
PLUS**

**INSPIRED**

**The Scream**  
Edvard Munch





### The Scream

Tempera on cardboard, c. 1893

36 x 28.9 in / 91 x 73.5 cm

Nasjonalmuseet (Oslo, Norway)

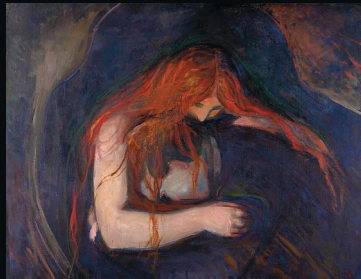
### EDVARD MUNCH

b. 1863, Ådalsbruk, Norway; d. 1944, Oslo, Norway

## How does Edvard Munch's *The Scream* inspire you?

Edvard Munch, a Norwegian Modernist artist, is recognized for his profound exploration of human anxiety and inner turmoil, often reflecting on the deep psychological tension throughout his life. His most famous work, *The Scream*, centers on a panic-stricken creature with hands clasped to its face, set against the abstract landscape of an Oslo bay and swirling, stratospheric clouds.

Initially titled *The Shriek*, Munch created the work following a hallucinatory episode while walking along a bay where he heard a huge endless scream course through nature. This existential experience led him to create multiple interpretations of the



composition between 1893 and 1910 in oils, pastels, and tempera.

Obscured in the sky is a small pencil inscription that translates to "Can only have been painted by a madman!" This marking acts as a self-reflection on the part of Munch, who art historians believe added the exclamation in 1895 following the critique that the painting must be the work of someone mentally disturbed. His dark exploration of the human condition continues to captivate audiences and provoke discussion over a century later, making *The Scream* a timeless symbol of existential anxiety.